



The National Electronic Interstate Compact Enterprise (NEICE) is a national electronic system for quickly and securely exchanging all the data and documents required by the Interstate Compact on the Placement of Children (ICPC) to place children safely and securely across state lines.

The Link keeps the members of the AAICPC connected and up to date. Each quarter of the year, *The Link* will deliver pertinent information regarding NEICE and the incredible strides that have been made to assist the members of the Association of Administrators of the Interstate Compact on the Placement of Children (AAICPC).

Moving Forward with Onboarding

STATE UPDATES

Our states are off to a great start for the new year. New states and counties are planning to onboard soon, and Clearinghouse Direct states are making critical updates to their NEICE connections. Here is the latest news.



Montana - Montana is connected to the Secure Document Portal (SDP) in production. They are ready to begin accepting and sending documents through SDP while they continue to work towards joining NEICE. Thank you to the Montana team and Tetras for getting this done!

Delaware (Onboarding as NCH-Direct) - Delaware has been meeting with the NEICE Team and working with Tetras on technical specifications to connect to NEICE.

Colorado (Onboarding as NCH-Direct): Colorado is now using the SDP as a decentralized state. The ICPC Deputy Compact Administrator continues to work with the county liaisons to guide this process.

Oklahoma (Onboarding as MCMS) - Oklahoma is in the process of scheduling its NEICE Kickoff. The Oklahoma team has made great strides in preparing for this kickoff. Keep up the good work!

Oregon (Onboarding as MCMS): Oregon continues conducting bi-weekly meetings with the NEICE Project Team and is working on interfacing NEICE with its state system.

You can see the current map of states on the NEICE support desk using the link below.

[NEICE State Map](#)

Alert to Convert: Clearinghouse Direct States 2.0 Update

Nine **NCH-Direct states must update their connection to NEICE from the 1.0 Bridge to the 2.0 Bridge by May 31, 2024**. This is due to a change in Microsoft's Azure cloud interface, which will no longer support the NEICE 1.0 connection.

Monthly meetings are being conducted along with individual state meetings to help assist in the conversion process. In addition, a community forum has been created to provide information that can assist states. You can access the forum through the [NEICE Support Desk](#).

Remember, this change will not affect the MCMS and CMS states, but it will improve the overall consistency of the NEICE experience for all NEICE users.

[NEICE Convert Discussion Forum](#)

Fostering Collaboration



The NEICE Guidance Committee

This is a special committee of the Association of Administrators of the Interstate Compact on the Placement of Children (AAICPC).

The NEICE Guidance Committee is made up of

ICPC volunteers. They collaborate closely with the NEICE project team to review state NEICE questions and proposed changes to the system. Ongoing communication and collaboration are essential to effectively guide the development and operations of NEICE and ensure compliance with applicable federal and state laws, policies and practices of the Interstate Compact on the Placement of Children to support the safe and timely placement of children across state lines. Thank you to the Guidance Committee volunteers!

The NEICE Technical Advisory Committee

This committee was formed to assist the AAICPC and NEICE Project team on technical matters related to NEICE. The purpose of the NEICE Technical Advisory Committee (TAC) is to advise the NEICE Project on the technical aspects of the system in each of its versions. The committee will advise and make recommendations on questions and decisions related to the technical content of the software, activities, work products, future direction, and technical documentation.

Committee recommendations will be made to the NEICE Guidance Committee, AAICPC Executive Committee, and Project Leadership Team, with final approval from the AAICPC Executive Committee before implementation.

The NEICE Project Team would like to thank all the state ICPC and IT professionals for their input, time, and expertise to support the continued advancement of the NEICE system for our children and families. You can find members of each committee below in the Resource section.

This Month's Q & A Tips

Clone a Case (Formerly Convert a Case)

Occasionally, changes may be required in a case that impacts the Regulation Type and/or the Type of Care. The quick and easy way to make those changes in NEICE is to Clone a new case. The Sending State ICPC Coordinator can clone either an active or closed case with the same child and placement resource. In NEICE 1.0, this process was identified as "Convert a Case."

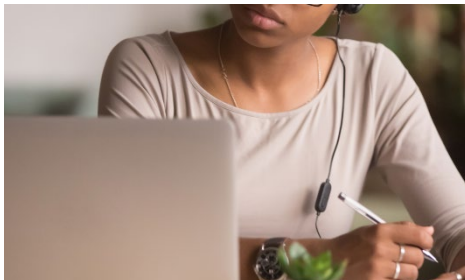
A new case is cloned from an existing case by updating three Parameters:

- Regulation Type
- Type of Care
- Received Date

NEICE will create a new case and allow the user to copy documents from the existing case to the new one. Selected documents other than the 100A and 100B that are in "attached" status will be copied to the cloned case.

You can find the NEICE job aid with step-by-step instructions to correctly clone a case and forward it to the receiving state at the [NEICE Support Desk](#).

Upcoming Training Dates



Coordinator Training

- Feb. 14, 2024
- Mar. 13, 2024
- Apr. 10, 2024

Caseworker Training

- Feb. 21, 2024
- Mar. 20, 2024
- Apr. 17, 2024

[REGISTER NOW](#)

NEICE MCMS/CMS User Meeting

- April 25, 2024 (NEICE Annual Security Training)

NCH 1.0 to 2.0 Conversion Meeting

- Feb. 14, 2024
- Mar. 13, 2024
- Apr. 10, 2024

NCH Direct Technical Meeting

- Feb. 15, 2024
- Mar. 21, 2024
- Apr. 18, 2024

NEICE Guidance Committee

- Feb. 16, 2024
- Mar. 15, 2024
- Apr. 19, 2024

Resources



"If you want to go fast, go alone. If you want to go far, go together." – African Proverb

AAICPC Resource:

[Resources](#) | [AAICPC](#) | [APHSA](#)

2024 NEICE Training Schedule:

NEICE Training Schedule (All NEICE Roles) at [NEICE Support Desk](#)

2023-2024 NEICE Technical Advisory Committee:

- Shannon Freeman (WA) - AAICPC President
- Heather Spencer (OH) - Immediate Past President AAICPC
- Shernelle Crawford (MD) - TAC Chair
- Leigh-Anne Bordas (ME)
- Mitchell George (WI)
- Brian Thatcher (NJ)
- Pamala Gambrell (LA)

NEICE Guidance Committee:

- Shannon Freeman (WA) - AAICPC President
- Heather Spencer (OH) - EC Representative
- Carrie Pederson (WI) - 2022-2023 Committee Member

Platform/Members:

- Candice Nahler (MO) - CH
- Don Travis (IN) - CH
- Chanda Yarbrough (VA) - CMS
- Gilbert Soto (NJ) - CMS
- Karen Austin (LA) - MCMS
- Maria Genca (CT) - MCMS

Past Committee Members (Non- Voting):

- Carissa Decker (ID) - CH
- Regi Daniel (DC) - CMS
- Scott Boland (FL) - CMS
- Mical Peterson (MN) - CH
- David Minko (AZ) - MCMS

NEICE Project Team:**APHSa Staff**

- Carla Fults, cfults@aphsa.org - Director, Interstate Affairs and Compact Operations
- Lynnea Kaufman, lkaufman@aphsa.org - NEICE Associate Director
- Marci McCoy-Roth, mroth@aphsa.org - NEICE Director & APHSa Chief Impact Officer
- Marcus Robinson, mrobinson@aphsa.org - NEICE Senior Project Associate

Tetrus Staff

- Raghu Govindaraj, raghu@tetruscorp.com - Vice President of Engineering
- Susmita Linga, susmita.linga@tetruscorp.com - Technical Lead
- Tom Livoti, tom.livoti@tetruscorp.com - Vice President of Customer Service

Send us your content ideas for *The Link* using [this form](#).



Amer. Public Human Svcs Assoc. | 1300 17th Street North, Suite 340, Arlington, VA 22209

[Unsubscribe mrobinson@aphsa.org](mailto:mrobinson@aphsa.org)

[Constant Contact Data Notice](#)

Sent by memberservice@aphsa.ccsend.com