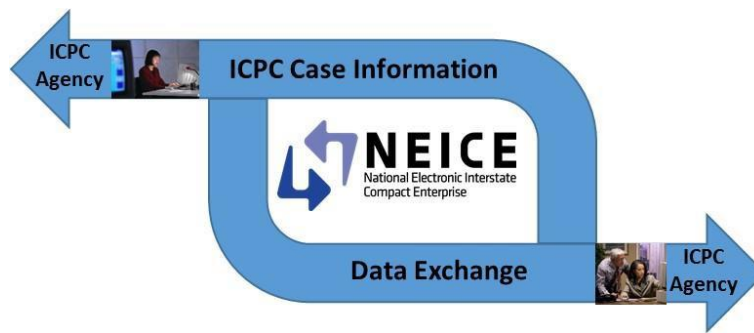


American Public Human Services Association



NEICE 2.0 CLEARINGHOUSE Interface Specification Document Version 1.2



Effective Date: December 13th, 2022

Change Log

Version No.	Date	Author(s)	Change Summary
1.0	09/18/2021	Susmiitaa Linga / Raghu Govindaraj	Initial Release
1.1	01/12/2022	Susmiitaa Linga	Added Case Status Update transmittal
1.2	12/05/2022	Susmiitaa Linga/Raghu Govindaraj	Home Status Update transmittal and added the case type in APPENDIX I

Contents

Definitions	7
NEICE Clearhouse Interface Overview	8
Web Service	9
Web Service Security	9
NEICE Clearinghouse ICPC Workflow Overview.....	10
NEICE Clearinghouse detailed web service workflow of transmittals	12
Interface Specifications.....	13
Sending Transmittals to Clearinghouse (submitTransmittal)	13
Sending Transmittals to Clearinghouse as a String Value (submitTransmittalFromXML)	14
Retrieve List of Transmittals from the Clearinghouse (getTransmittalList).....	16
Acknowledge Transmittal (acknowledgeTransmittalReceipt)	18
Get Case Status and Details (getCaseDetails)	19
PING Clearinghouse (pingClearinghouse)	19
Participating State List (GetParticipatingStateList).....	20
Submit Transmittal Message Definitions	21
Transmittal	21
Home Study Request	21
Home Study Update.....	22
Home Study Response	23
Placement Decision.....	24
Follow-up Message	25
Status Report Request	25
Status Report Response	25
Progress Report Request	26
Progress Report Response	26
Concurrence Request.....	27
Concurrence Response	27
Case Status Update	28

APPENDIX I: Mapping for Case Type, Regulation types and Placement Types allowed	29
APPENDIX II: Mapping for Placement Types to 100A document and IEPD	31
APPENDIX III: Mapping for Placement Types to 100B document and IEPD	36
APPENDIX IV: High Level Development Steps for the State Agencies	37

Introduction

The National Electronic Interstate Compact Enterprise (NEICE) is an electronic case processing Information Technology solution that supports the administration of the Interstate Compact on the Placement of Children (ICPC) by exchanging data and documents across state jurisdictions electronically. Launched in November 2013 as a pilot project with six states, NEICE assisted states in significantly shortening the time it takes to place children across state lines, and saved participating states thousands of dollars in mailing and copying costs. A comprehensive evaluation of the project was conducted to assess overall impact and efficiency.

Early findings suggested significantly shortened timelines and savings, and the Administration for Children and Families (ACF), Administration on Children, Youth and Families (ACYF), and Children's Bureau (CB) provided a new cooperative agreement to the American Public Human Services Association (APHSA) and the Association of Administrators for the Interstate Compact on the Placement of Children (AAICPC) to implement NEICE nationwide, beginning in June 2015. States can use the Case Management System, the Modular Case Management System or the NEICE Clearinghouse to SACWIS/CCWIS connection method (the latter of which is described here).

The primary objectives and benefits of NEICE are:

- Shortened processing time – Faster delivery of case information between the participating states lead to faster processing of children's cases.
- Potential reductions in administrative costs – Initial reviews have shown that there are potential reductions in administrative costs.
- Paper reduction – Achieves dollar savings in paper, postage, storage, courier, etc. as well as minimizes the staff burden of archiving records and destroying archived records according to State regulations.
- Error reduction – Minimize double entry of any information. Single entry for electronic exchange reduces the opportunity for keystroke error and thus decreases the time spent by child support and judicial/legal agency staff correcting data entry errors.
- Greater accountability – Tracks end to end case progress between participant states.

The NEICE Clearinghouse supports the transfer of electronic ICPC case information between the Sending and the Receiving State. This NEICE Clearinghouse also collects metadata to support the national reporting of ICPC cases.

In other words:

The NEICE Clearinghouse can be thought of as an intelligent interstate highway system that manages the flow of traffic (cases) on a highway, inspecting the data from the Sending State to ensure that all required information is present, ensuring that the case is routed to the correct Receiving State, and ensuring that the case has been delivered to the Receiving State. In addition, the Clearinghouse will also collect metadata to support AAICPC national reporting requirements.

The objective of this document is to provide a detailed specification of the interfaces between the state SACWIS/Child Welfare systems and the National Electronic Interstate Compact Enterprise (NEICE) Clearinghouse.

Definitions

Term	Definition
NEICE CMS	The NEICE Case Management System is a cloud-based system that takes data and documents from one state and translates them into a standard data format using National Information Exchange Model standards. The data and documents are then pushed to a receiving state, which then processes the ICPC request.
NEICE MCMS	The NEICE Modular Case Management System is a single tenant application hosted on the states infrastructure that takes data and documents from one state and translates them into a standard data format using National Information Exchange Model standards. The data and documents are then pushed to a receiving state, which then processes the ICPC request.
NEICE CH	The NEICE Clearinghouse supports the transfer of electronic ICPC case information between the Sending and the Receiving State. This NEICE Clearinghouse will also collect metadata to support the national reporting and monitoring of ICPC cases
NEICE Case	A NEICE Case contains a request to place a child or multiple children from the state that is responsible for that child or children into another state using an ICPC compliant system. A unique NEICE case contains a child or group of children; a Regulation Type; a Placement Resource; and Placement Type, that applies to all the children in the case.
NEICE Child	A child in one state who the state requests to place in another state in compliance with ICPC regulations and guidance, using the NEICE CMS or MCMS or the NEICE Clearinghouse.
Placement Resource	The party, individual or organization, with whom the child or children will be placed in the Receiving State.
Regulation Type	The five ICPC Regulations supported by NEICE govern the interstate placement of children. NEICE supports: Regulation 1 – Intact Family Relocation; Regulation 2 – Home Study Request; Regulation 4 – Residential Treatment; Regulation 7 – Priority Placement; and Regulation 12 – Private Adoption.
Sending State	The State in the NEICE Case requesting placement of a child in another state.
Receiving State	The State in the NEICE Case where the child is to be placed upon approval of the Home Study.
Transmittal	The two-way, electronic communication within NEICE between the two states in a NEICE Case (Sending State and Receiving State).
Home Study Request	The initial request made by the Sending State in a NEICE Case for placement of a child(ren) in the Receiving State.
Placement	The act of assigning a child to a Placement Resource in the Receiving State.
SACWIS	State Automated Child Welfare Information System is a state's system that contains children, agencies, and Placement Resources.
CCWIS	Comprehensive Child Welfare Information System is the state state's system that contains children, agencies, and Placement Resources.
IEPD	The NEICE Information Exchange Packet Document (IEPD) defines the XML structure of the messages in the interactions between the sending state and the receiving state.
100A	Form ICPC-100A is the sending agency's formal notice to the receiving state of its intention to make an interstate placement and a request for a finding as to whether the placement would or would not be contrary to the interests of the child
100B	Form ICPC-100B is used to (1) confirm that an approved placement in accordance with the Compact has been made, (2) withdraw a request prior to the home study, (3) indicate that an approved resource will not be used, (4) report a change of address, and (5) close an ICPC case.
ICPC Packet	An ICPC request is either electronic from a NEICE participant state or in paper from a non-NEICE State.
Web Service	A standards-based technology that facilitates inter-system data exchanges.

NEICE Clearinghouse Interface Overview

This section provides an overview of the manner in which ICPC case data will be exchanged between the Sending and Receiving states through the NEICE Clearinghouse. The high level architecture is presented in the figure below.

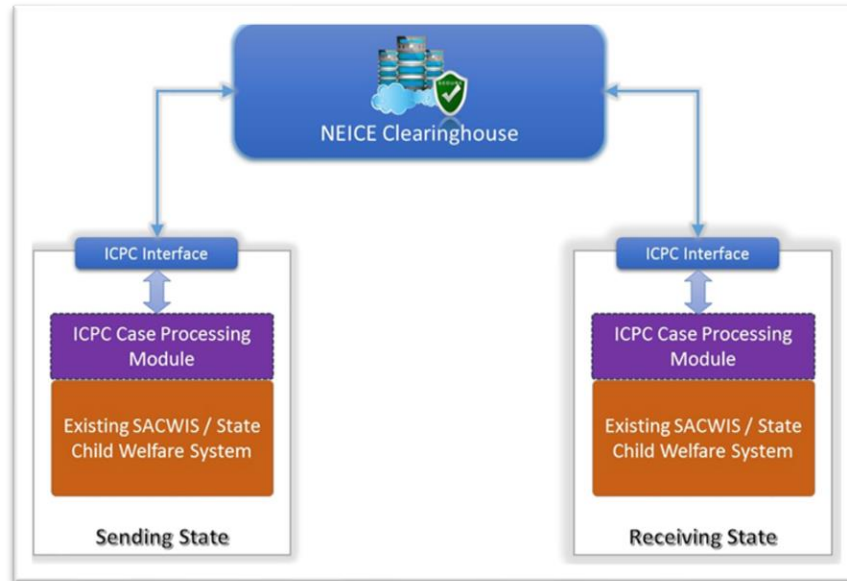


Figure 1: NEICE Clearinghouse Architecture

As described in Figure 1, each Sending State will create an ICPC case in its own state SACWIS/ Child Welfare system. Once the ICPC Case is complete and ready to be sent, the state SACWIS/ Child Welfare system formats the identified ICPC information, as specified by the NEICE Information Exchange Package Document (IEPD) and transmits the formatted packet to the NEICE Clearinghouse.

The NEICE Clearinghouse performs the following high-level tasks:

- Review the incoming ICPC packet to validate that the required data is present;
- Identify the message recipient State or County;
- Assign a unique ID for case ,child and placement resource tracking;
- Extract data from the packet required for national reporting;
- Route and send the ICPC packet to the recipient State or County;
- Ensure that packet is received and notify transmitting state of successful delivery;
- Track and route any interactions that occur between the two agencies; and
- Keep a record of all the interactions for each case.

Once the recipient State receives the formatted ICPC packet, the recipient State's SACWIS/Child Welfare system will convert the ICPC packet so that the data may be loaded and processed according to that state's standards. (NOTE: For receiving states using NEICE M/CMS, the conversion will not be necessary, as processing is handled by the NEICE M/CMS, which uses the same IEPD structure as the clearinghouse)

The IEPD document defines the manner in which the interactions will occur between the sending and the receiving state.

During the time that an ICPC case is being processed, there may be different types of messages that would flow in between the Sending state, the Receiving state, and the NEICE Clearinghouse. This is represented by the various interfaces that are described in this document.

The NEICE Clearinghouse supports the following interfaces for the state agencies to:

1. **Send Transmittals to the Clearinghouse (submitTransmittal)** - Submit IEPD Transmittal Messages which include the different transmittals defined in the IEPD for Interstate Placement like Home Study Request, Home Study Response, Placement Decision, etc.
2. **Sending Transmittals to Clearinghouse as a String (submitTransmittalFromXml)** - Submit IEPD Transmittal Messages which include various messages defined in the IEPD for Interstate Placement like Home Study Request, Home Study Response, Placement Decision as a serialized XML string
3. **Retrieve List of Transmittals from the Clearinghouse (getTransmittalList)** – This interface will be used to check if, there are, any transmittal messages waiting for the state agencies and retrieve the list of transaction ids.
4. **Retrieve Transmittal (retrieveTransmittal)** – Retrieve the IEPD Transmittal Message from the clearinghouse.
5. **Acknowledge Transmittal (acknowledgeTransmittalReceipt)** - Acknowledge the successful retrieval and processing of the retrieved transmittal message
6. **Get Case Status and Details (getCaseDetails)** – Retrieve the case details and the status of the last submitted transmittal message.
7. **PING Clearinghouse (pingClearinghouse)** – Performs a ping on the clearinghouse to test the connectivity.
8. **Get list of Participating States (GetParticipatingStateList)** – Retrieve the list of the states that are currently participating in the NEICE clearinghouse.
9. **CaseStatusUpdate** – This interface will be used to send key progress indicators on the case.

All the above interfaces in the clearinghouse are implemented using XML based SOAP 1.2 web services.

Web Service

Web Service is a standard based technology used to facilitate system-to-system interoperability, typically (though not exclusively) over the internet. The first step of the development process will be for NEICE Clearinghouse team to provide a Web Services Description Language document (WSDL, pronounced 'wiz-dəl'). The WSDL specifies NEICE Clearinghouse Web Services at the technical level, and will be used by your developers to build the software to interact with NEICE Clearinghouse Web Services.

Web Service Security

The NEICE Clearinghouse uses secure https protocol over TLS 1.2 or higher and will also create a unique API key for each state agency. Every API key is unique to the state and the endpoint from where the state will be connecting to the clearinghouse. The state agency should populate this API key in the SOAP headers on every communication. NEICE Clearinghouse will verify the API key with the credentials and the permission set configured for the state to be able to successfully communicate using the web services.

NEICE Clearinghouse ICPC Workflow Overview

All ICPC information transmitted between the states will be transmitted using the NEICETransmittalDocument NIEM XML message and submitted to the Clearinghouse using the submitTransmittal operation. A NEICETransmittalDocument is a high-level message envelope that will be used to create multiple types of messages like Home Study Request, Home Study Response, etc. This document has a more detailed description in the following sections about the different request types that can be constructed using the NEICETransmittalDocument.

The following diagram gives a high-level overview of a typical exchange between the states for placing an ICPC child.

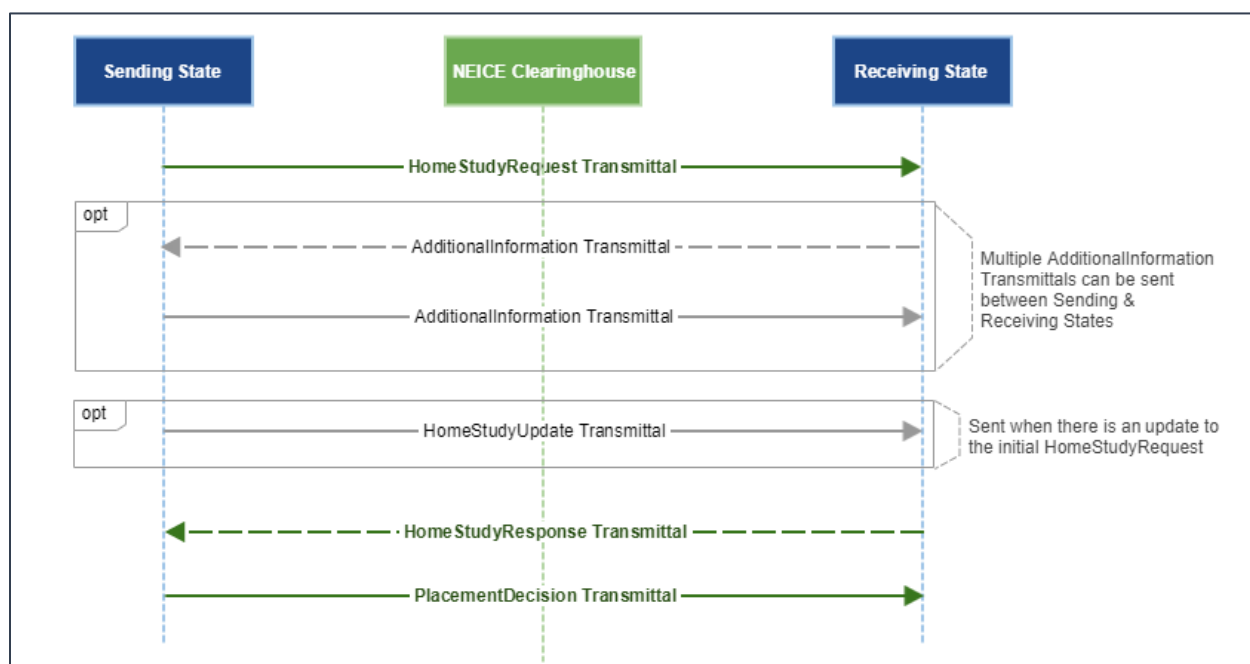


Figure 2: Standard workflow for ICPC Placement

The flow starts with an initial request from a sending state which initiates a home study request to be performed to place a child in a receiving state. This request will be constructed as a transmittal having a RequestType of HomeStudyRequest and contains detailed information about the child, the placement resource of where the child is going to be placed, the detailed 100A containing information about the placement type, the service requested, etc. This message would then be transmitted to the clearinghouse using the submitTransmittal() operation with the soap header urn:NEICE.WCFHeader. The header will have the RequestType of HomeStudyRequest. The clearinghouse typically performs all common ICPC validations on this request message and assigns a unique NEICEID for the case, child, and placement resource, this information is returned in the response message of submitTransmittal().

The message is then routed to the designated receiving state queue. Once in the state queue the receiving state will use the getTransmittal() list operation to check for transmittals waiting in the queue and then retrieve this transmittal using the retrieveTransmittal() operation (see Fig. 2 for detailed workflow) to parse and process the home study request sent from the sending state. The receiving state ICPC staff may request additional information from the sending state before or during the processing of

the home study request. Such additional information requests and responses between the states should be constructed as a transmittal having a RequestType of AdditionalInformation. This is a generic transmittal and both states can use them to solicit or send additional information about the case.

After conducting the home study the receiving state makes a final determination on the case, this decision will be sent as a home study response to the sending state. This response will be constructed as a transmittal having a RequestType of HomeStudyResponse and contains the approved 100A information and the details of the approval or denial of the home study.

The sending state gets the home study response by using the retrieveTransmittal() operation and will be able to parse and process the home study response. The sending state makes a determination on the placement, the decision to either place or not place the child using the home study decision that was received in the Home Study Response. After the decision is made, the sending state will then send a placement decision to the receiving state notifying them of the decision. This message will be constructed as a transmittal using NEICETransmittalDocument with a RequestType of PlacementDecision. This message will contain the detailed 100B information confirming if the child will be placed or not with the approved placement resource.

NEICE Clearinghouse detailed web service workflow of transmittals

The following sequence diagram gives a detailed overview of the web service transactions that are performed by the states to send and receive transmittals to and from the clearinghouse. The diagram shows the web services flows of a HomeStudyRequest sent from the sending state to the receiving state and the HomeStudyResponse sent from the receiving state to the sending state. The states will use the same approach shown below to send and receive any type of transmittal to and from the clearinghouse.

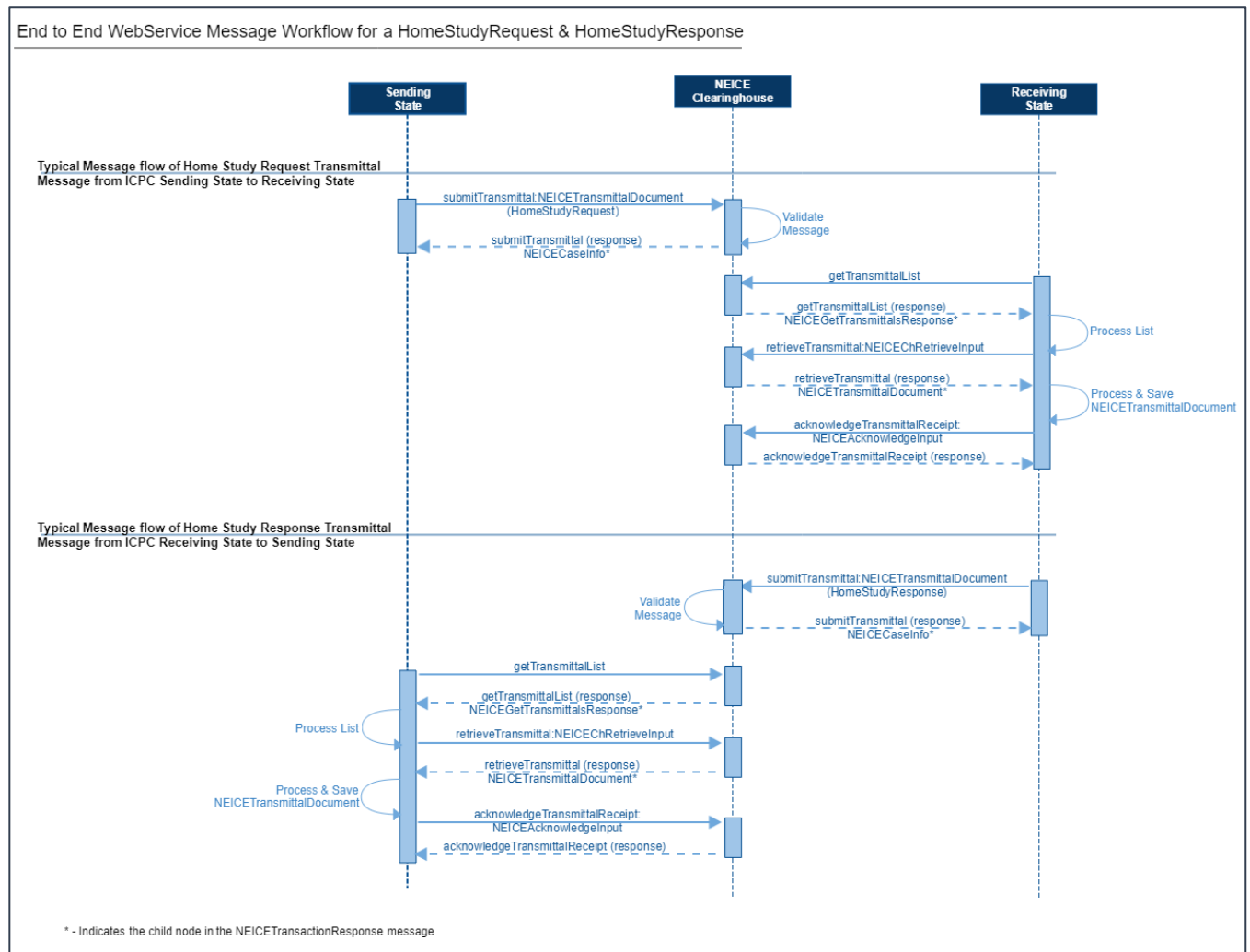
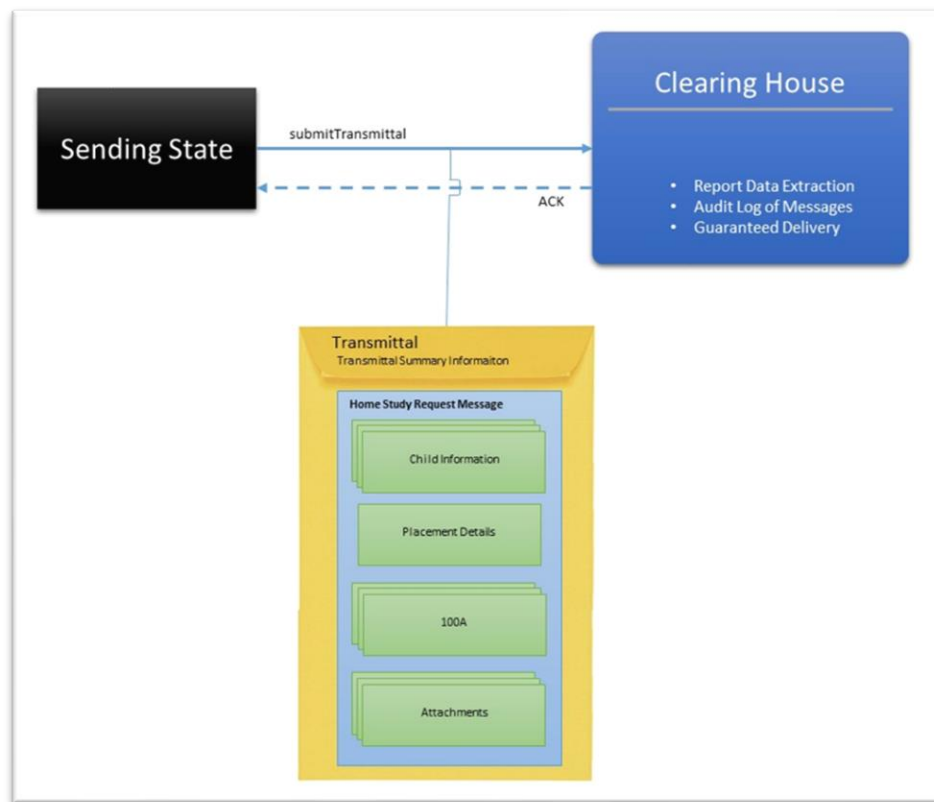


Figure 3: Clearinghouse web service workflow for submitTransmittal()

Interface Specifications

Sending Transmittals to Clearinghouse (submitTransmittal)

This interface is used to send all types of transmittals to the clearinghouse. The sending client should use the submitTransmittal() interface defined in the WSDL. This interface takes the NEICETransmittalDocument as input and returns NEICETransactionResponse. All the different types of transmittals that can be submitted using this interface are defined later in this document.



SERVICE REQUEST HEADER

Header Name	Header Namespace	Header Value	
APIKey	urn:NEICE.WCFHeader	Value should be the API Key provided by Tetrus.	
RequestType	urn:NEICE.WCFHeader	Value should be Transaction type for the transmittal and it should match the TransmittalType provided in the Input XML	
		HomeStudyRequest	HomeStudyResponse
		HomeStudyUpdate	PlacementDecision
		StatusReportRequest	StatusReportResponse
		ProgressReportRequest	ProgressReportResponse
		ConcurrenceRequest	ConcurrenceResponse
		AdditionalInformation	CaseStatusRequest
		CaseStatusUpdate	

INPUT

Parameters	Datatype	Occurs	Notes
NEICETransmittalDocument	NEICETransmittalDocumentType	1	Defined under section Submit Transmittal Message Definitions

OUTPUT

Parameters	Datatype	Occurs	Notes
NEICETransactionResponse		1	The Response structure
responseStatus	String	1	Provides the status of the call "Success" or "Error"
transactionId	String	0..1	Provides a unique TransactionID for each call
errorDetails		0..*	The errorDetails structure is populated only if there is an error and the responseStatus="Error". There could be multiple errors for every call.
errorCode	String	1	An error code for the error
errorText	String	1	An error description of the error
xmlResponse		0..1	The xmlReponse node would contain the interface specific response and would be populated only if the responseStatus="Success"
NEICECaseInfo		0..1	The Case Info will be populated only for a New Home study request when the new case is created
NEICECaseId	String	1	UNIQUE NEICE Clearinghouse CaseID created for new Placement/Homestudy requests and a reference for all other transmittals as a verification
StateCaseId	String	1	The state case id provided in the input
NEICEChildInfo		0..*	The NEICE Child ID information created in the clearinghouse for each child submitted in the Home Study request
StateChildID	String	1	The state child id provided in the input
NEICEChildID	String	1	The NEICE child id assigned in the clearinghouse
NEICEPRInfo		1	The NEICE Placementresource ID information created in the clearinghouse for each PlacementResource submitted in the Home Study request
StatePRId	String	1	The state placementresource id provided in the input
NEICEPRId	String	1	The NEICE placementresource id assigned in the clearinghouse

Sending Transmittals to Clearinghouse as a String Value (submitTransmittalFromXML)

This interface is functionally equivalent to the submitTransmittal() interface but takes a serialized XML string as input. The sending client should use the submitTransmittalFromXML() interface defined in the WSDL to transmit the message as an XML String value instead of using the NIEM object (NEICETransmittalDocument). The XML constructed should be a valid XML as per the schema defined in the NEICE IEPD.

Note: The primary purpose of this interface is to provide a simpler string based interface to support states using legacy platforms and older versions of programming languages that do not support complex marshalling and unmarshalling operations required to construct the NIEM XMLs. This interface is functionally equivalent to the submitTransmittal() operation.

SERVICE REQUEST HEADER

Header Name	Header Namespace	Header Value	
APIKey	urn:NEICE.WCFHeader	Need to send the API Key provided by Tetrus.	
RequestType	urn:NEICE.WCFHeader	Provide the Transaction type which should match the TransmittalType provided in the Input XML	
		HomeStudyRequest	HomeStudyResponse
		HomeStudyUpdate	PlacementDecision
		StatusReportRequest	StatusReportResponse
		ProgressReportRequest	ProgressReportResponse
		ConcurrenceRequest	ConcurrenceResponse
		AdditionalInformation	CaseStatusRequest
		CaseStatusUpdate	

INPUT

Parameters	Datatype	Occurs	Notes
xmlNEICETransmittalDocument	String	1	Defined under section Submit Transmittal Message Definitions

OUTPUT

Parameters	Datatype	Occurs	Notes
NEICETransactionResponse		1	The Response structure
responseStatus	String	1	Provides the status of the call "Success" or "Error"
transactionId	String	0..1	Provides a unique TransactionID for each call
errorDetails		0..*	The errorDetails structure is populated only if there is an error and the responseStatus="Error". There could be multiple errors for every call.
errorCode	String	1	An error code for the error
errorText	String	1	An error description of the error
xmlResponse		0..1	The xmlReponse node would contain the interface specific response and would be populated only if the responseStatus="Success"
NEICECaseInfo		0..1	The Case Info will be populated only for a New Home study request when the new case is created
NEICECaseId	String	1	UNIQUE NEICE Clearinghouse CaseID created for new Placement/Homestudy requests and a reference for all other transmittals as a verification
StateCaseId	String	1	The state case id provided in the input
NEICEChildInfo		0..*	The NEICE Child ID information created in the clearinghouse for each child submitted in the Home Study request
StateChildID	String	1	The state child id provided in the input
NEICEChildID	String	1	The NEICE child id assigned in the clearinghouse
NEICEPRInfo		1	The NEICE Placementresource ID information

Parameters	Datatype	Occurs	Notes
			created in the clearinghouse for each PlacementResource submitted in the Home Study request
StatePRId	String	1	The state placementresource id provided in the input
NEICEPRId	String	1	The NEICE placementresource id assigned in the clearinghouse

Retrieve List of Transmittals from the Clearinghouse (getTransmittalList)

This interface will be used by the state agencies to poll the clearinghouse periodically and check if there are any transmittals for the agency system. The polling interval should be set for a reasonably long interval so that it does not burden the clearinghouse interfaces with too many quick polls. The response of this interface will return a list of transmittal IDs waiting for the agency system and the date time of when the message was received.

Note: If multiple transmittals are waiting in the queue then they should be processed chronologically using the message date and time to preserve the sequence of processing transmittals for a single case

SERVICE REQUEST HEADER

Header Name	Header Namespace	Header Value
APIKey	urn:NEICE.WCFHeader	Key provided to the state from NEICE
RequestType	urn:NEICE.WCFHeader	TransmittalListRequest

INPUT

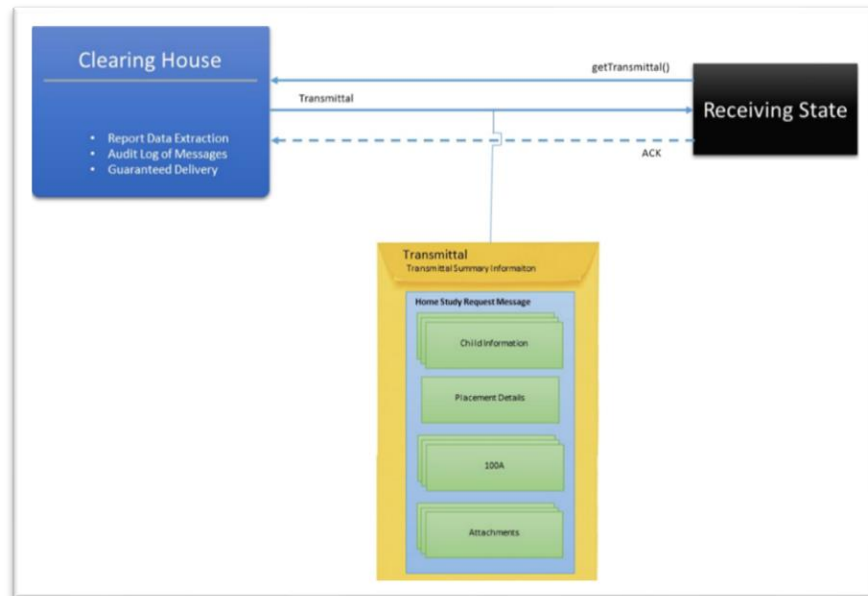
This interface does not require any input to the clearinghouse.

OUTPUT

Parameters	Datatype	Occurs	Notes
NEICETransactionResponse		1	The Response structure
responseStatus	String	1	Provides the status of the call "Success" or "Error"
transactionId	String	0..1	Provides a unique TransactionID for each call
errorDetails		0..*	The errorDetails structure is populated only if there is an error and the responseStatus="Error". There could be multiple errors for every call.
errorCode	String	1	An error code for the error
errorText	String	1	An error description of the error
xmlResponse		0..1	The xmlReponse node would contain the interface specific response and would be populated only if the responseStatus="Success"
NEICEGetTransmittalsResponse		1	
message		1..*	List of waiting messages
messageId	String	1	The unique message id using which the transmittal can be retrieved
messageDateTime	dateTime	1	Date and Time of the message Note: The retrieval of the messages should be based on the date and time with the earliest message received and processed first to preserve the order in which it was transmitted.

Retrieve Transmittal (retrieveTransmittal)

This interface will be used to retrieve the IEPD transmittals from the clearinghouse by the state agencies. Before executing this interface, the agencies should execute the getTransmittalList interface to get the list of pending messages. Then the agency can retrieve each transmittal messages in the order of date and time created.



SERVICE REQUEST HEADER

Header Name	Header Namespace	Header Value
APIKey	urn:NEICE.WCFHeader	Key provided to the state from NEICE
RequestType	urn:NEICE.WCFHeader	TransmittalDetailsRequest

INPUT

Parameters	Datatype	Occurs	Notes
NEICECHRetrieveInput		1	
NEICERetrieveTransactionID	String	1	The message id retrieved using the getTransmittalList() interface

OUTPUT

Parameters	Datatype	Occurs	Notes
NEICETransactionResponse		1	The Response structure
responseStatus	String	1	Provides the status of the call "Success" or "Error"
transactionId	String	0..1	Provides a unique TransactionID for each call
errorDetails		0..*	The errorDetails structure is populated only if there is an error and the responseStatus="Error". There could be multiple errors for every call.
errorCode	String	1	An error code for the error
errorText	String	1	An error description of the error

Parameters	Datatype	Occurs	Notes
xmlResponse		0..1	The xmlResponse node would contain the interface specific response and would be populated only if the responseStatus="Success"
NEICETransmittalDocument	NEICETransmittalDocument	1	Defined under section Submit Transmittal Message Definitions

Acknowledge Transmittal (acknowledgeTransmittalReceipt)

This interface will be used by the state agencies to acknowledge that a transmittal has been read and processed successfully. This is an important step for the state agency to notify the clearinghouse to remove the message from the queue. If the acknowledgement is not sent to the clearinghouse, the transmittals will be kept in the queue for the state agency to retrieve in future getTransmittalList calls.

Note: Acknowledging the transmittal without successfully processing the request will delete the message permanently from the state queue and cannot be retrieved. Similarly not acknowledging the transmittal after processing the message, will make it appear as a pending transmittal on all future getTransmittalList() calls and the state agency should make sure previously processed messages are not reprocessed to avoid duplicate entries in the state system.

SERVICE REQUEST HEADER

Header Name	Header Namespace	Header Value
APIKey	urn:NEICE.WCFHeader	Key provided to the state from NEICE
RequestType	urn:NEICE.WCFHeader	TransmittalAcknowledgementRequest

INPUT

Parameters	Datatype	Occurs	Notes
NEICEAcknowledgeInput		1	
NEICEAckTransactionID	String	1	The message id retrieved using the getTransmittalList() interface

OUTPUT

Parameters	Datatype	Occurs	Notes
NEICETransactionResponse		1	The Response structure
responseStatus	String	1	Provides the status of the call "Success" or "Error"
transactionId	String	0..1	Provides a unique TransactionID for each call
errorDetails		0..*	The errorDetails structure is populated only if there is an error and the responseStatus="Error". There could be multiple errors for every call.
errorCode	String	1	An error code for the error
errorText	String	1	An error description of the error
xmlResponse		0..1	The xmlResponse node would contain the interface specific response and would be populated only if the responseStatus="Success"
NEICETransmittalDocument	NEICETransmittalDocument	1	Defined under section Submit Transmittal Message Definitions

Get Case Status and Details (getCaseDetails)

This interface will be used by the stage agencies to find the status of the case and the delivery status of the last transmittal sent for the case.

SERVICE REQUEST HEADER

Header Name	Header Namespace	Header Value
APIKey	urn:NEICE.WCFHeader	Key provided to the state from NEICE
RequestType	urn:NEICE.WCFHeader	CaseStatusRequest

INPUT

Parameters	Datatype	Occurs	Notes
NEICECaseList		1	
neiceCaselId	String	0..*	The unique NEICE ClearinghouseID
stateCaselId	String	0..*	The unique State CaselID

OUTPUT

Parameters	Datatype	Occurs	Notes
NEICETransactionResponse		1	The Response structure
responseStatus	String	1	Provides the status of the call "Success" or "Error"
transactionId	String	0..1	Provides a unique TransactionID for each call
errorDetails		0..*	The errorDetails structure is populated only if there is an error and the responseStatus="Error". There could be multiple errors for every call.
errorCode	String	1	An error code for the error
errorText	String	1	An error description of the error
xmlResponse		0..1	The xmlReponse node would contain the interface specific response and would be populated only if the responseStatus="Success"
NEICECaseStatusResponse		1	
statusResponse		1..*	List of waiting messages
neiceCaselId	String	1	The unique NEICE ClearinghouseID
stateCaselId	String	1	The unique State CaselID
caseStatus	String	1	The status of the case
lastTransmittalID	String	0..1	The ID of last transmittal sent for the case
transmittalStatus	String	0..1	The delivery status of the last transmittal

PING Clearinghouse (pingClearinghouse)

This interface helps the state agencies to test the service and make sure the connectivity to the clearinghouse is healthy.

SERVICE REQUEST HEADER

Header Name	Header Namespace	Header Value
APIKey	urn:NEICE.WCFHeader	Key provided to the state from NEICE
RequestType	urn:NEICE.WCFHeader	PingClearingHouse

INPUT

Parameters	Datatype	Occurs	Notes
PINGInput	String	1	A message indicating that the operation was successful will be returned.

OUTPUT

Parameters	Datatype	Occurs	Notes
NEICETransactionResponse		1	The Response structure
responseStatus	String	1	Provides the status of the call "Success" or "Error"
transactionId	String	0..1	Provides a unique TransactionID for each call
errorDetails		0..*	The errorDetails structure is populated only if there is an error and the responseStatus="Error". There could be multiple errors for every call.
errorCode	String	1	An error code for the error
errorText	String	1	An error description of the error
xmlResponse		0..1	The xmlReponse node would contain the interface specific response and would be populated only if the responseStatus="Success"
PINGResponse	String	1	A message indicating that the operation was successful will be returned.

Participating State List (GetParticipatingStateList)

This interface helps the state to retrieves all the participating states

HEADER

Header Name	Header Namespace	Header Value
APIKey	urn:NEICE.WCFHeader	Key provided to the state from NEICE
RequestType	urn:NEICE.WCFHeader	GetStateList

INPUT

Parameters	Datatype	Occurs	Notes

OUTPUT

Parameters	Datatype	Occurs	Notes
List<NCHPilotState>		1	The Response structure
StateCode	String	1	Participating state code
StateName	String	1	Participating state name
AgencyName	String	1	Participating Agency Name
Address	String	1	Participating Agency Address
City	String	1	Participating Agency City
Zip	String	1	Participating Agency Zipcode
TimeZone	String	1	Participating State's Time Zone

Submit Transmittal Message Definitions

Transmittal

A transmittal is required to send any type of request, response, or confirmation between the states.

The transmittal contains a common set of metadata elements that are common for all the transmittal types. The common elements include the message creation date, message identification, the message sending state, the message receiving state, and a transmittal summary information.

The transmittal summary defines the specific details of the transmittal and may include elements that are specific to the type of transmittal (Refer to the latest version of NEICE Clearinghouse 2.0 - Interface Mapping Document.xlsx[Transmittal Summary] for details). The transmittal category code which defines the type of transmittal and transmittal subject children are commonly referred in all transmittal types. The transmittal subject children refers to children for whom the transmittal is being sent, this could include all the children in case or only a subset of children in the case depending on the context of the transmittal.

Home Study Request

Home Study Request is the first step required to initiate the ICPC process for a child. It is the request sent to the Receiving State where the proposed placement for the child will be made.

For every child defined in the, Transmittal Subject Child, there should be a corresponding NEICEChildInformation, NEICEDocument100a elements, and the 100A Initial document attached in the payload to be transmitted. The 100B Initial Placement document is mandatory when sending a Regulation 1 home study. For every child in the case, a 100A and 100B (For Regulation 1) document should be attached in the Transmittal Attachment along with other documents.

The following sections give the higher level mandatory elements that are part of the XML request that will be sent for Home Study Request transmittal. The table only provides the higher level elements that are required for the transmittals. For detailed mapping of all elements under the higher level elements, please refer to the mapping document (Refer to the latest version of NEICE Clearinghouse 2.0 - Interface Mapping Document v#.#.xlsx[Home Study Request-Update])

Parameters	Occurs	Notes
NEICTransmittalDocument	1	
TransmittalSummaryInformation	1..1	
TransmittalCategoryCode	1	Value for this element should be HOME_STUDY_REQUEST
TransmittalSubjectChild	1..*	List of all the children who are the subject of this homestudy request transmittal (Each child in this list should refer to a corresponding NEICEChildInformation, NEICEDocument100a and optionally NEICEDocument100b elements in the XML)
HomeStudyRequest	1..1	
NEICEChildInformation	1..*	
NEICEDocument100a	1..*	
NEICEDocument100b	0..*	This is mandatory when sending a Regulation 1 home study request
TransmittalAttachment	1..*	The mandatory document types vary depending on the RegulationType being sent.

		<ul style="list-style-type: none"> • 100AInitial is a mandatory document for each child in all Regulation Types. • 100BInitialPlacement is an additional mandatory document for each child when sending Regulation 1
--	--	--

Home Study Update

Home Study Update is transmittal type used to update a previous Home Study Request sent to the other state. With this operation, the states should be able to add a child to a case and update any case information sent in the Home Study Request. The XML looks the same as the Home Study Request but the TransmittalCategoryCode should be HOME_STUDY_UPDATE.

The following sections give the higher level mandatory elements that are part of the XML request that will be sent for Home Study Update transmittal. The table only provides the higher level elements that are required for the transmittals. For detailed mapping of all elements under the higher level elements, please refer to the mapping document (Refer to the latest version of NEICE Clearinghouse 2.0 - Interface Mapping Document v#.#.xlsx[Home Study Request-Update])

Parameters	Occurs	Notes
NEICETransmittalDocument	1	
TransmittalSummaryInformation	1..1	
TransmittalCategoryCode	1	Value for this element should be HOME_STUDY_UPDATE
TransmittalSubjectChild	1..*	List of all the children who are the subject of this homestudy update transmittal (Each child in this list should refer to a corresponding NEICEChildInformation, NEICEDocument100a and optionally NEICEDocument100b elements in the XML)
HomeStudyRequest	1..1	
NEICEChildInformation	1..*	
NEICEDocument100a	1..*	
NEICEDocument100b	0..*	This is mandatory when sending a Regulation 1
TransmittalAttachment	1..*	The mandatory document types vary depending on the RegulationType being sent. <ul style="list-style-type: none"> • 100AInitial is a mandatory document for each child in all Regulation Types. • 100BInitialPlacement is an additional mandatory document for each child when sending Regulation 1

Scenario 1: Adding a Child to an existing case:

A single child or multiple children can be added to a home study that was previously submitted. To add a child or children the sending agency should send the home study update XML containing, the transmittal subject children who are being added to the case and corresponding NEICEChildInformation along with the 100A(s) for the new child(ren), optionally the 100B(s) for the new child(ren) for a Regulation 1 case and the required attachments.

TransmittalSubjectChild: New Child(ren)

NEICEChildInformation Node: New Child(ren) details

NEICEDocument100a Node: New Child(ren) 100A

NEICEDocument100b Node: New Child(ren) 100B (For Regulation 1)

Transmittal Attachment: New Child(ren) 100A PDF attachment, 100B PDF attachment (For Regulation 1)

Note: If the state receives additional child information not referenced in the transmittal subject child should be ignored while processing.

Scenario 2: Update a Child and other details in an existing case:

Send the complete XML for all the children to be updated along with the 100A documents with the updated information.

Include the children who are updated or newly added as the transmittal subject child. There should be a NEICEChildInformation for all the children identified in the transmittal subject child along with the NEICEDocument100a Node and 100A document, optionally the 100B document and the required attachments.

TransmittalSubjectChild: Child(ren) to be updated or added

NEICEChildInformation: Updated Child(ren) details for each child in the TransmittalSubjectChild

NEICEDocument100a: Updated 100A details for each child in the TransmittalSubjectChild

NEICEDocument100b Node: Updated 100B details for each child in the TransmittalSubjectChild
(For a Regulation 1 case)

Transmittal Attachment: Updated 100A PDF attachment, Updated 100B PDF attachment (For a Regulation 1 case)

Scenario 3: Deleting a Child from an existing case:

A child cannot be deleted from a case once submitted to another state. A 100B placement decision transmittal with a reason code of “Withdrawn” should be sent to remove a child from consideration for the placement request.

Home Study Response

Home study decision is the formal notice to the sending state from the receiving state for their decision to either approve or deny the Homestudy request from the sending state.

For every child defined in the NEICEChildInformation, there should be a corresponding Home Study Response, NEICEDocument100aSigned and the 100ACompleted document attached in the payload to be transmitted. For every child in the case, a 100ACompleted document should be attached in the Transmittal Attachment along with other documents.

The following sections give the higher level mandatory elements that are part of the XML request that will be sent for Home Study Response transmittal. The table only provides the higher level elements that are required for the transmittals. For detailed mapping of all elements under the higher level elements, please refer to the mapping document (Refer to the latest version of NEICE Clearinghouse 2.0 - Interface Mapping Document v#.#.xlsx[Home Study Response])

Parameters	Occurs	Notes
NEICETransmittalDocument	1	
TransmittalSummaryInformation	1..1	
TransmittalCategoryCode	1	Value for this element should be HOME_STUDY_RESPONSE
TransmittalSubjectChild	1..*	List of all the children who are the subject of this homestudy response transmittal (Each child in this list should refer to a corresponding NEICEChildInformation and NEICEDocument100aSigned)
HomeStudyResponse	1..1	
NEICEChildInformation	1..*	
NEICEDocument100aSigned	1..*	
TransmittalAttachment	1..*	100ACompleted is a mandatory document for each child.

Placement Decision

The Placement Decision message consists of the ICPC Form 100B which can be used for the following:

1. Confirm an approved placement has been made
2. Withdraw a request prior to the home study
3. Indicate that the approved resource will not be used
4. Report change of address
5. Close an ICPC case

For every child defined in the transmittal subject child in the transmittal summary there should be a corresponding NEICEChildInformation and NEICEDocument100b elements under the PlacementDecision.

The mandatory document attachment types vary depending on the PlacementDecision being sent.

- 100BInitialPlacement is mandatory when sending the Initial Placement.
- 100BPlacementChange is mandatory when sending the Change Placement.
- 100BClosure is mandatory when sending the Placement Termination.

The 100B document(s) should be associated to the child in the Transmittal Attachment.

The following sections give the higher level mandatory elements that are part of the XML request that will be sent for Placement Decision transmittal. The table only provides the higher level elements that are required for the transmittals. For detailed mapping of all elements under the higher level elements, please refer to the mapping document (Refer to the latest version of NEICE Clearinghouse 2.0 - Interface Mapping Document v#.#.xlsx[PLACEMENT_DECISION])

Parameters	Occurs	Notes
NEICETransmittalDocument	1	
TransmittalSummaryInformation	1..1	
TransmittalCategoryCode	1	Value for this element should be PLACEMENT_DECISION
TransmittalSubjectChild	1..*	List of all the children who are the subject of this placement decision transmittal (Each child in this list should refer to a corresponding NEICEChildInformation and NEICEDocument100b)
PlacementDecision	1..1	
NEICEChildInformation	1..*	

NEICEDocument100b	1..*	
InitialPlacement	1..1	This is mandatory when sending the PlacementDecision for Initial Placement
ChangePlacement	1..1	This is mandatory when sending the PlacementDecision for Change Placement
PlacementTermination	1..1	This is mandatory when sending the PlacementDecision for Placement Closure.
TransmittalAttachment	1..*	<p>The mandatory document types vary depending on the PlacementDecision being sent.</p> <ul style="list-style-type: none"> • 100BInitialPlacement is mandatory for each child when sending the Initial Placement. • 100BPlacementChange is mandatory for each child when sending the Change Placement. • 100BClosure is mandatory when for each child sending the Placement Termination.

Follow-up Message

Follow-up messages include the request and response messages between the states to follow up the status of a home study or progress reports on a placement or Concurrence on a case or to request or send any Additional Information.

Status Report Request

Status Report Request transmittal is used to request the Receiving state for an update/status on the Home study sent from the Sending State.

The following sections give the higher level mandatory elements that are part of the XML request that will be sent for Status Report Request transmittal. The table only provides the higher level elements that are required for the transmittals. For detailed mapping of all elements under the higher level elements, please refer to the mapping document (Refer to the latest version of NEICE Clearinghouse 2.0 - Interface Mapping Document v#.#.xlsx[Status Report Request])

Parameters	Occurs	Notes
NEICETransmittalDocument	1	
TransmittalSummaryInformation	1..1	
TransmittalCategoryCode	1	Value for this element should be STATUS_REPORT_REQUEST
TransmittalSubjectChild	1..*	List of all the children who are the subject of this transmittal
FollowupRequest	0..1	
TransmittalAttachment	0..*	

Status Report Response

Status Report Response transmittal is used to send the Sending state an update/status on the Home study request received in the Receiving State.

The following sections give the higher-level mandatory elements that are part of the XML request that will be sent for Status Report Response transmittal. The table only provides the higher-level elements that are required for the transmittals. For detailed mapping of all elements under the higher level

elements, please refer to the mapping document (Refer to the latest version of NEICE Clearinghouse 2.0 - Interface Mapping Document v#.#.xlsx[Status Report Response])

Parameters	Occurs	Notes
NEICTransmittalDocument	1	
TransmittalSummaryInformation	1..1	
TransmittalCategoryCode	1	Value for this element should be STATUS_REPORT_RESPONSE
TransmittalSubjectChild	1..*	List of all the children who are the subject of this transmittal
FollowupResponse	0..1	
TransmittalAttachment	1..*	ReportHomeStudyStatus is mandatory document.

Progress Report Request

Progress Report Request transmittal is used by the Sending state to request the Receiving state for a Supervision report.

The following sections give the higher level mandatory elements that are part of the XML request that will be sent for Progress Report Request transmittal. The table only provides the higher level elements that are required for the transmittals. For detailed mapping of all elements under the higher level elements, please refer to the mapping document (Refer to the latest version of NEICE Clearinghouse 2.0 - Interface Mapping Document v#.#.xlsx[Progress Report Request])

Parameters	Occurs	Notes
NEICTransmittalDocument	1	
TransmittalSummaryInformation	1..1	
TransmittalCategoryCode	1	Value for this element should be PROGRESS_REPORT_REQUEST
TransmittalSubjectChild	1..*	List of all the children who are the subject of this transmittal
FollowupRequest	0..1	
TransmittalAttachment	0..*	

Progress Report Response

Progress Report Response transmittal is used by the Receiving state to submit the Supervision report to the Sending state.

The following sections give the higher level mandatory elements that are part of the XML request that will be sent for Progress Report Response transmittal. The table only provides the higher level elements that are required for the transmittals. For detailed mapping of all elements under the higher level elements, please refer to the mapping document (Refer to the latest version of NEICE Clearinghouse 2.0 - Interface Mapping Document v#.#.xlsx[Progress Report Response])

Parameters	Occurs	Notes
NEICTransmittalDocument	1	
TransmittalSummaryInformation	1..1	
TransmittalCategoryCode	1	Value for this element should be PROGRESS_REPORT_RESPONSE
TransmittalSubjectChild	1..*	List of all the children who are the subject of this transmittal
FollowupResponse	0..1	
TransmittalAttachment	1..*	ReportSupervision is a mandatory document.

Concurrence Request

Concurrence Request transmittal is used by the states to request concurrence on the case.

The following sections give the higher level mandatory elements that are part of the XML request that will be sent for Concurrence Request transmittal. The table only provides the higher level elements that are required for the transmittals. For detailed mapping of all elements under the higher level elements, please refer to the mapping document (Refer to the latest version of NEICE Clearinghouse 2.0 - Interface Mapping Document v#.#.xlsx[Concurrence Request])

Parameters	Occurs	Notes
NEICETransmittalDocument	1	
TransmittalSummaryInformation	1..1	
TransmittalCategoryCode	1	Value for this element should be CONCURRENCE_REQUEST
TransmittalSubjectChild	0..*	List of all the children who are the subject of this transmittal
TransmittalAttachment	0..*	

Concurrence Response

Concurrence Response transmittal is used by the states to send concurrence on the case.

The following sections give the higher level mandatory elements that are part of the XML request that will be sent for Concurrence Response transmittal. The table only provides the higher level elements that are required for the transmittals. For detailed mapping of all elements under the higher level elements, please refer to the mapping document (Refer to the latest version of NEICE Clearinghouse 2.0 - Interface Mapping Document v#.#.xlsx[Concurrence Response])

Parameters	Occurs	Notes
NEICETransmittalDocument	1	
TransmittalSummaryInformation	1..1	
TransmittalCategoryCode	1	Value for this element should be CONCURRENCE_RESPONSE
TransmittalSubjectChild	0..*	List of all the children who are the subject of this transmittal
TransmittalAttachment	0..*	

Additional Information

Additional Information transmittals are general transmittals used to communicate between the states to request and respond for all additional information. This includes, but not limited, states that request additional or missing documentation on a received ICPC homestudy request, states that send additional documentation to an already submitted home study etc.

The following sections give the higher level mandatory elements that are part of the XML request that will be sent for Additional Information transmittal. The table only provides the higher level elements that are required for the transmittals. For detailed mapping of all elements under the higher-level elements, please refer to the mapping document (Refer to the latest version of NEICE Clearinghouse 2.0 - Interface Mapping Document v#.#.xlsx[Additional Information])

Parameters	Occurs	Notes
NEICETransmittalDocument	1	
TransmittalSummaryInformation	1..1	
TransmittalCategoryCode	1	Value for this element should be ADDITIONAL_INFORMATION
TransmittalSubjectChild	0..*	List of all the children who are the subject of this transmittal
TransmittalAttachment	0..*	

Case Status Update

Case Status Update transmittal is used by the states involved in the case to update the status/progress of the case.

The following sections give the higher level mandatory elements that are part of the XML request that will be sent for Case Status Update transmittal. The table only provides the higher level elements that are required for the transmittals. For detailed mapping of all elements under the higher level elements, please refer to the mapping document (Refer to the latest version of NEICE Clearinghouse 2.0 - Interface Mapping Document v#.#.xlsx[Case Status Update])

Parameters	Occurs	Notes
NEICETransmittalDocument	1	
TransmittalSummaryInformation	1..1	
TransmittalCategoryCode	1	Value for this element should be CASE_STATUS_UPDATE
CaseStatusUpdate	1..1	

APPENDIX I: Mapping for Case Type, Regulation types and Placement Types allowed

Case Type	Regulation	XPATH and value in IEPD	Placement Types Allowed for this regulation
Public	Reg. 1 – Intact Family Relocation	/cb_exch:NEICETransmittalDocument/cb_ext:TransmittalSummaryInformation/cb_ext:HomeStudyCategoryCode = "IntactRelocation"	Parent
			Relative (Not Parent)
			Foster Family Home
			Adoptive Home
			Other – Other text
Private	Reg. 1 – Intact Family Relocation	/cb_exch:NEICETransmittalDocument/cb_ext:TransmittalSummaryInformation/cb_ext:HomeStudyCategoryCode = "IntactRelocation"	Parent
			Relative (Not Parent)
			Foster Family Home
			Adoptive Home
			Other – Other text
Public	Reg. 2 – Home Study Request	/cb_exch:NEICETransmittalDocument/cb_ext:TransmittalSummaryInformation/cb_ext:HomeStudyCategoryCode = "HomeStudy"	Parent
			Relative (Not Parent)
			Foster Family Home
			Adoptive Home
			Other – Other text

Case Type	Regulation	XPATH and value in IEPD	Placement Types Allowed for this Regulation
Public	Reg. 4 – Residential Treatment Facility	/cb_exch:NEICETransmittalDocument/cb_ext:TransmittalSummaryInformation/cb_ext:HomeStudyCategoryCode = “ResidentialPlacement”	Group Home Care
			Child Caring Institution
			Residential Treatment Center
			Institutional Care_Article VI Adjudicated Delinquent
			Other – Other Text
Private	Reg. 4 – Residential Treatment Facility	/cb_exch:NEICETransmittalDocument/cb_ext:TransmittalSummaryInformation/cb_ext:HomeStudyCategoryCode = “ResidentialPlacement”	Group Home Care
			Child Caring Institution
			Residential Treatment Center
			Other – Other Text
Public	Reg. 7 – Priority Placement	/cb_exch:NEICETransmittalDocument/cb_ext:TransmittalSummaryInformation/cb_ext:HomeStudyCategoryCode = “PriorityPlacement”	Parent
			Relative (Not Parent)
			Other – Other text
Private	Reg. 12 – Private Adoption	/cb_exch:NEICETransmittalDocument/cb_ext:TransmittalSummaryInformation/cb_ext:HomeStudyCategoryCode = “PrivateAdoption”	Adoption Home
			Other – Other text

APPENDIX II: Mapping for Placement Types to 100A document and IEPD

Placement Type	XPATH	XPATH Values
Parent	/cb_exch:NEICETransmittalDocument/cb_ext:HomeStudyRequest/cb_ext:NEICEDocument100a/cb_ext:PlacementResource/cb_ext:PlacementCategoryCode	<u>PlacementCategoryCode:</u> Parent
	(AND)	
	/cb_exch:NEICETransmittalDocument/cb_ext:HomeStudyRequest/cb_ext:NEICEDocument100a/cb_ext:IntendedPlacement/cb_ext:PlacementAugmentation/cb_ext:RelativePlacementResourcesCode	<u>RelativePlacementResourcesCode:</u> Father Mother Parents StepFather StepMother Legal Mother Legal Father

Placement Type	XPATH	XPATH Values
Relative (Not Parent)	/cb_exch:NEICETransmittalDocument/cb_ext:HomeStudyRequest/cb_ext:NEICEDocument100a/cb_ext:PlacementResource/cb_ext:PlacementCategoryCode	<u>PlacementCategoryCode:</u> RelativeNotParent
	(AND)	
	/cb_exch:NEICETransmittalDocument/cb_ext:HomeStudyRequest/cb_ext:NEICEDocument100a/cb_ext:IntendedPlacement/cb_ext:PlacementAugmentation/cb_ext:RelativePlacementResourcesCode	<u>RelativePlacementResourcesCode:</u> AdultAunt AdultBrother AdultCousin AdultMatCousin AdultPatCousin AdultSister AdultUncle Grandfather GrandfatherAndGrandmother Grandmother LegalGuardian MatAdultAunt MatAdultAuntAndUncle MatAdultUncle MatGrandfather MatGrandmother MatGrandparents NonRelative OtherRelative PatAdultAunt PatAdultAuntAndUncle PatAdultUncle PatGrandfather PatGrandmother PatGrandparents ProspectiveAdoptiveParents StepAdultBrother StepAdultSister

Placement Type	XPATH	XPATH Values
FosterFamilyHome	/cb_exch:NEICETransmittalDocument/cb_ext:HomeStudyRequest/cb_ext:NEICEDocument100a/cb_ext:PlacementResource/cb_ext:PlacementCategoryCode	<u>PlacementCategoryCode:</u> FosterFamilyHome
	(AND)	
	/cb_exch:NEICETransmittalDocument/cb_ext:HomeStudyRequest/cb_ext:NEICEDocument100a/cb_ext:IntendedPlacement/cb_ext:PlacementAugmentation/cb_ext:RelativePlacementResourcesCode	<u>RelativePlacementResourcesCode:</u> AdultAunt AdultBrother AdultCousin AdultMatCousin AdultPatCousin AdultSister AdultUncle Father Grandfather GrandfatherAndGrandmother Grandmother Legal Father Legal Mother LegalGuardian MatAdultAunt MatAdultAuntAndUncle MatAdultUncle MatGrandfather MatGrandmother MatGrandparents Mother NonRelative OtherRelative Parents PatAdultAunt PatAdultAuntAndUncle PatAdultUncle PatGrandfather PatGrandmother PatGrandparents ProspectiveAdoptiveParents StepAdultBrother StepAdultSister StepFather StepMother

Placement Type	XPATH	XPATH Values
Adoptive Home	/cb_exch:NEICETransmittalDocument/cb_ext:HomeStudyRequest/cb_ext:NEICEDocument100a/cb_ext:IntendedPlacement/cyfs:PlacementCategoryCode	<u>PlacementCategoryCode:</u> AdoptiveHomeFinalizingInSendingState OR AdoptiveHomeFinalizingInReceivingState OR AdoptiveHomePending
	(AND)	
	/cb_exch:NEICETransmittalDocument/cb_ext:HomeStudyRequest/cb_ext:NEICEDocument100a/cb_ext:IntendedPlacement/cb_ext:PlacementAugmentation/cb_ext:RelativePlacementResourcesCode	<u>RelativePlacementResourcesCode:</u> AdultAunt AdultBrother AdultCousin AdultMatCousin AdultPatCousin AdultSister AdultUncle Father Grandfather GrandfatherAndGrandmother Grandmother Legal Father Legal Mother LegalGuardian MatAdultAunt MatAdultAuntAndUncle MatAdultUncle MatGrandfather MatGrandmother MatGrandparents Mother NonRelative OtherRelative Parents PatAdultAunt PatAdultAuntAndUncle PatAdultUncle PatGrandfather PatGrandmother PatGrandparents ProspectiveAdoptiveParents StepAdultBrother StepAdultSister StepFather

Placement Type	XPATH	XPATH Values
		StepMother
Group Home Care	/cb_exch:NEICETransmittalDocument/cb_ext:HomeStudyRequest/cb_ext:NEICEDocument100a/cb_ext:IntendedPlacement/cyfs:PlacementCategoryCode	<u>PlacementCategoryCode:</u> GroupHomeCare
	(AND)	
	/cb_exch:NEICETransmittalDocument/cb_ext:HomeStudyRequest/cb_ext:NEICEDocument100a/cb_ext:IntendedPlacement/cb_ext:PlacementAugmentation/cb_ext:RelativePlacementResourcesCode	<u>RelativePlacementResourcesCode:</u> Agency Organization Treatment Facility
Residential Treatment Center	/cb_exch:NEICETransmittalDocument/cb_ext:HomeStudyRequest/cb_ext:NEICEDocument100a/cb_ext:IntendedPlacement/cyfs:PlacementCategoryCode	<u>PlacementCategoryCode:</u> ResidentialTreatmentCenter
	(AND)	
	/cb_exch:NEICETransmittalDocument/cb_ext:HomeStudyRequest/cb_ext:NEICEDocument100a/cb_ext:IntendedPlacement/cb_ext:PlacementAugmentation/cb_ext:RelativePlacementResourcesCode	<u>RelativePlacementResourcesCode:</u> Agency Organization Treatment Facility
Child Caring Institution	/cb_exch:NEICETransmittalDocument/cb_ext:HomeStudyRequest/cb_ext:NEICEDocument100a/cb_ext:IntendedPlacement/cyfs:PlacementCategoryCode	<u>PlacementCategoryCode:</u> ChildCaringInstitution
	(AND)	
	/cb_exch:NEICETransmittalDocument/cb_ext:HomeStudyRequest/cb_ext:NEICEDocument100a/cb_ext:IntendedPlacement/cb_ext:PlacementAugmentation/cb_ext:RelativePlacementResourcesCode	<u>RelativePlacementResourcesCode:</u> Agency Organization Treatment Facility
Institutional Care-Article VI	/cb_exch:NEICETransmittalDocument/cb_ext:HomeStudyRequest/cb_ext:NEICEDocument100a/cb_ext:IntendedPlacement/cyfs:PlacementCategoryCode	<u>PlacementCategoryCode:</u> InstitutionalCareArticleVIAdjudicatedDelinquent
	(AND)	
	/cb_exch:NEICETransmittalDocument/cb_ext:HomeStudyRequest/cb_ext:NEICEDocument100a/cb_ext:IntendedPlacement/cb_ext:PlacementAugmentation/cb_ext:RelativePlacementResourcesCode	<u>RelativePlacementResourcesCode:</u> Agency Organization Treatment Facility

APPENDIX III: Mapping for Placement Types to 100B document and IEPD

Placement Type	XPATH	XPATH Values
Parent	/cb_exch:NEICETransmittalDocument/cb_ext:PlacementDecision/cb_ext:NEICEDocument100b/cb_ext:PlacementResource/cb_ext:PlacementCategoryCode	<u>PlacementCategoryCode:</u> Parent
Relative (Not Parent)	/cb_exch:NEICETransmittalDocument/cb_ext:PlacementDecision/cb_ext:NEICEDocument100b/cb_ext:PlacementResource/cb_ext:PlacementCategoryCode	<u>PlacementCategoryCode:</u> RelativeNotParent
FosterFamilyHome	/cb_exch:NEICETransmittalDocument/cb_ext:PlacementDecision/cb_ext:NEICEDocument100b/cb_ext:PlacementResource/cb_ext:PlacementCategoryCode	<u>PlacementCategoryCode:</u> FosterFamilyHome
Adoptive Home	/cb_exch:NEICETransmittalDocument/cb_ext:PlacementDecision/cb_ext:NEICEDocument100b/cb_ext:PlacementResource/cb_ext:PlacementCategoryCode	<u>PlacementCategoryCode:</u> AdoptiveHomeFinalizingInSendingState OR AdoptiveHomeFinalizingInReceivingState OR AdoptiveHomePending
Group Home Care	/cb_exch:NEICETransmittalDocument/cb_ext:PlacementDecision/cb_ext:NEICEDocument100b/cb_ext:PlacementResource/cb_ext:PlacementCategoryCode	<u>PlacementCategoryCode:</u> GroupHomeCare
Residential Treatment Center	/cb_exch:NEICETransmittalDocument/cb_ext:PlacementDecision/cb_ext:NEICEDocument100b/cb_ext:PlacementResource/cb_ext:PlacementCategoryCode	<u>PlacementCategoryCode:</u> ResidentialTreatmentCenter
Child Caring Institution	/cb_exch:NEICETransmittalDocument/cb_ext:PlacementDecision/cb_ext:NEICEDocument100b/cb_ext:PlacementResource/cb_ext:PlacementCategoryCode	<u>PlacementCategoryCode:</u> ChildCaringInstitution
Institutional Care- Article VI	/cb_exch:NEICETransmittalDocument/cb_ext:PlacementDecision/cb_ext:NEICEDocument100b/cb_ext:PlacementResource/cb_ext:PlacementCategoryCode	<u>PlacementCategoryCode:</u> InstitutionalCareArticleVIAdjudicatedDelinquent

APPENDIX IV: High Level Development Steps for the State Agencies

Activity	State Agency	NEICE Clearinghouse
IP Whitelisting	<ul style="list-style-type: none">Identify the external IP address that the state would be sending the requests from, to the clearinghouse	<ul style="list-style-type: none">Provision the IP address in the NEICE clearinghouseAdd it to the permitted IP addresses in the firewall access control list
Create API Key	<ul style="list-style-type: none">Receive API Key from NEICE clearinghouse team	<ul style="list-style-type: none">Create a unique API key for the state agency.
Implement PING Service to test connectivity	<ul style="list-style-type: none">Develop and test the PING service	<ul style="list-style-type: none">Verify the test is successful
Implement the reminder of the Clearinghouse web service interfaces	<ul style="list-style-type: none">Develop the ICPC functionality within the state child welfare systemDevelop the interfaces for the various transmittals and exchanges defined earlier in this document	<ul style="list-style-type: none">Support the state with technical queries
Test Interfaces	<ul style="list-style-type: none">Test the interfaces developed	<ul style="list-style-type: none">Support with the test
Move to Production	<ul style="list-style-type: none">Move the code to production	<ul style="list-style-type: none">Provision agency for Production submission